

Module: Eurostandard: 7340x3000x2950 mm [4 Pcs.]
Internal height: 2460 mm

Load-bearing capacity of the ceiling structure: 150 kg/m²
Load-bearing capacity of the floor structure: 250 kg/m²
Do not lift the container when under load!

Colors:
Construction color: RAL 9002
Panels outside: RAL 9002
Walls inside: White

Roof (Ceiling) - Outside/Inside layers:

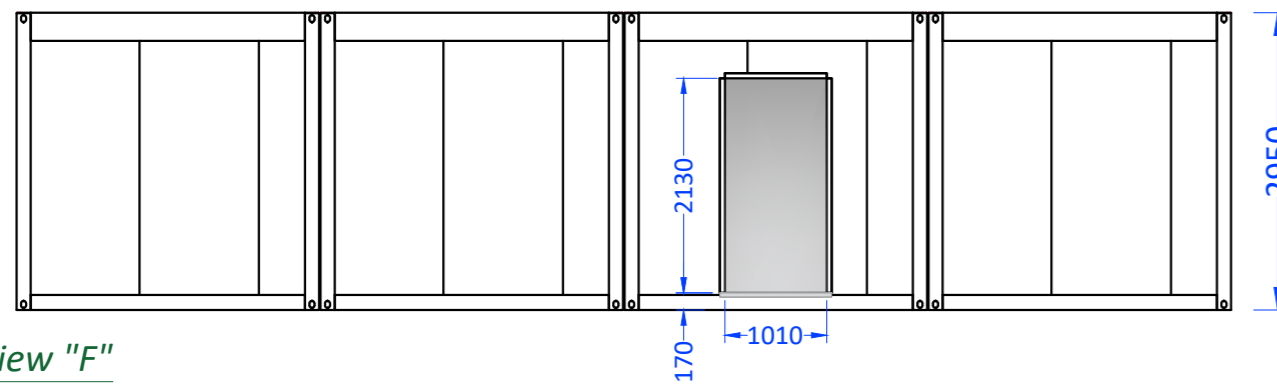
- Folded sheet 0,55 mm galvanized and plasticized (RAL 9002)
- Vapor-permeable, watertight barrier (PAP pro 145g/m²)
- 60mm EPS (Expanded Polystyrene), $\lambda=0,0404$ W/mK, $U=0,68$ W/m²K
- 120 mm PIR Supreme Panels ($U=0,146$ W/m²K)
- Vapor resistant foil Sarnavap E500
- 30x60mm Wooden beams GL28H
- 12.5mm Fermacell fibre gypsum boards
- 12.5mm Fermacell fibre gypsum boards
- Cleaneo Acoustic field with square perforation 12/25Q, Black wave + 30mm MW

Walls (outdoor) - Outside/Inside layers:

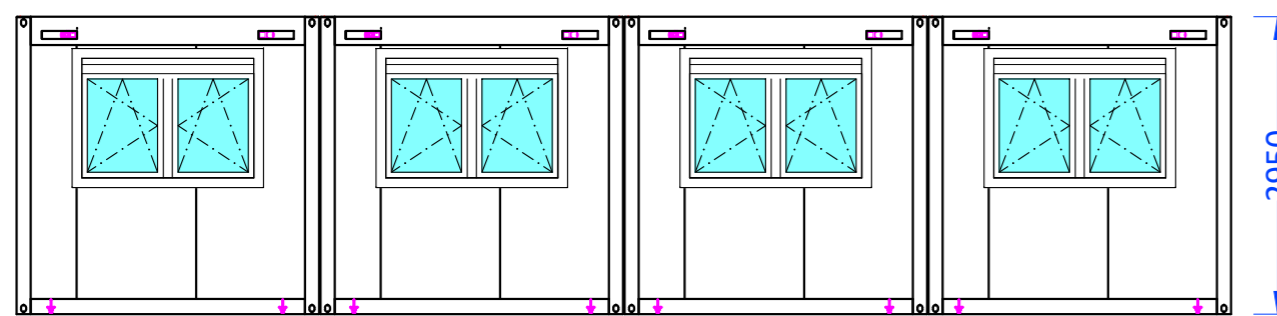
- AW1**
- 120mm PIR Supreme Panels (Outside corrugated RAL9002) ($U=0,146$ W/m²K)
 - 12.5mm A13 Knauf gypsum cardboard board
 - 12.5mm A13 Knauf gypsum cardboard board
 - Primed and painted white Q4, latex paint, mat colour

- AW2**
- 120mm PIR Supreme Panels (Outside corrugated RAL9002) ($U=0,146$ W/m²K) [(James Hardie 3S12 EI30-RF1) (VKF=15729)]
 - CW/UW 50mm galvanized steel profile frame "e=416mm"
 - 12.5mm Fermacell fibre gypsum boards
 - 12.5mm Fermacell fibre gypsum boards
 - Primed and painted white Q4, standard paint, mat colour

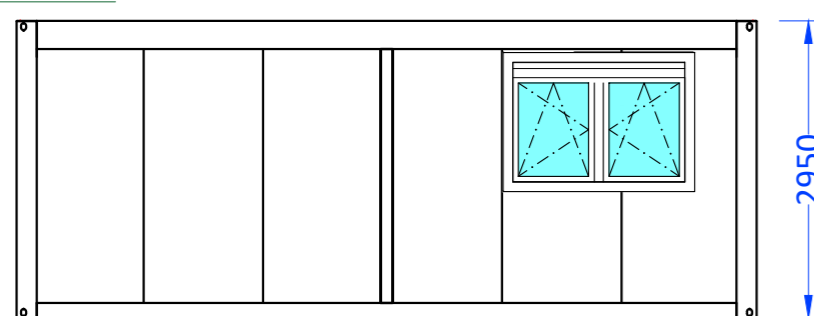
Side view "A"



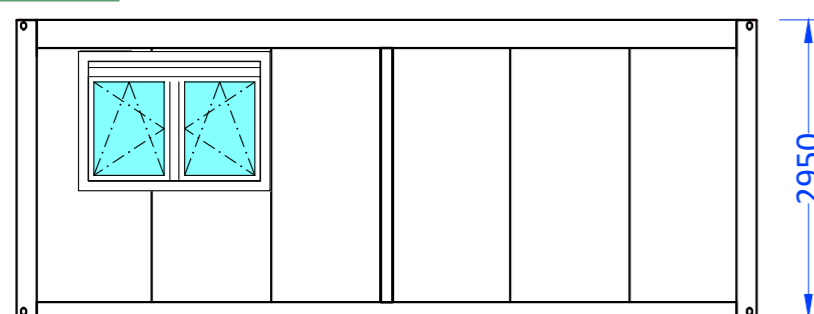
Side view "F"



Side view "C"



Side view "D"



Walls (indoor) - Outside/Inside layers:

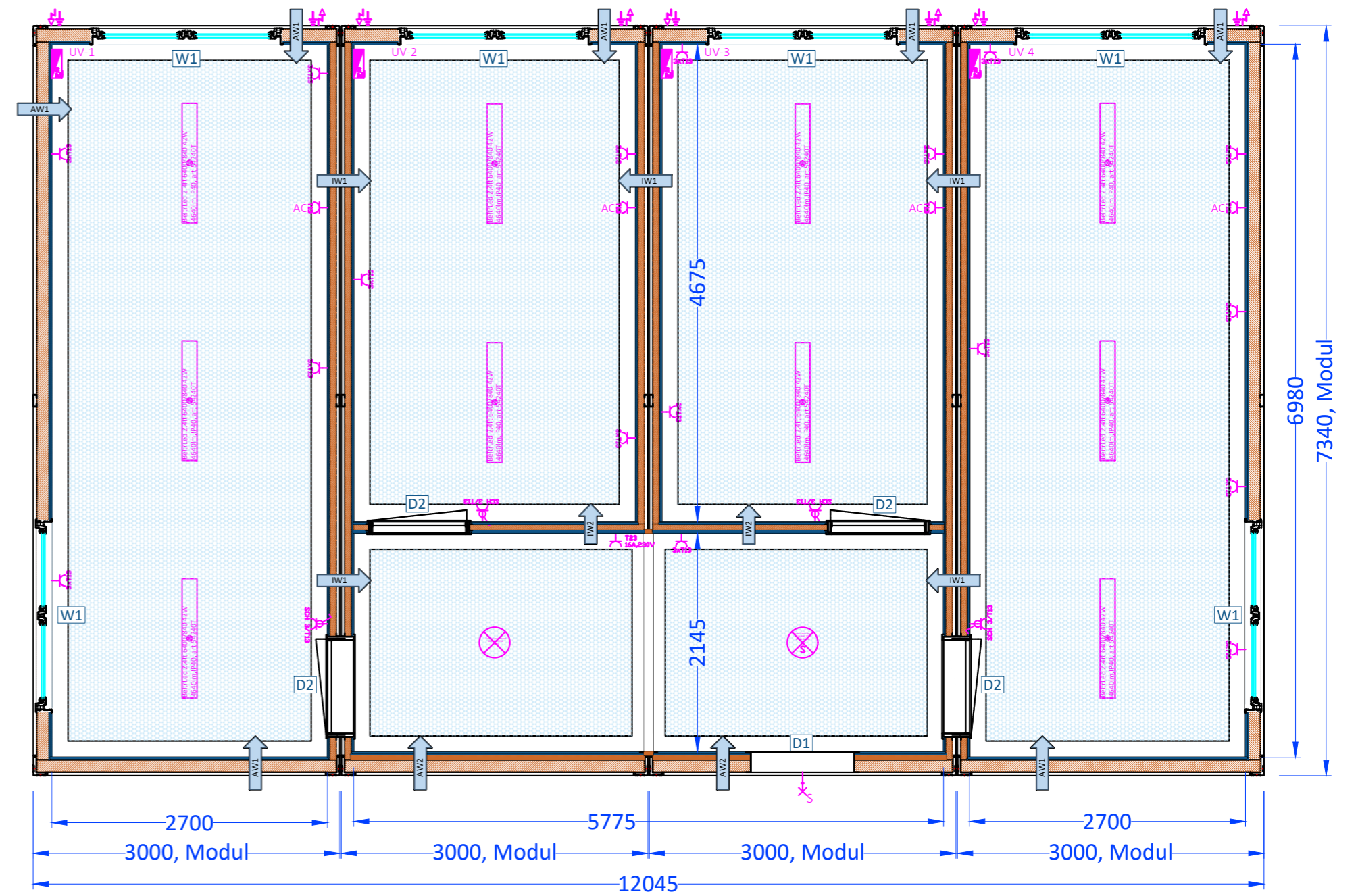
- IW1**
- Primed and painted white Q4, latex paint, mat colour
 - 12.5mm A13 Knauf gypsum cardboard board
 - 12.5mm A13 Knauf gypsum cardboard board
 - 60mm PIR Panels ($U=0,33$ W/m²K)
 - 85mm air
 - 60mm PIR Panels ($U=0,33$ W/m²K)
 - 12.5mm A13 Knauf gypsum cardboard board
 - 12.5mm A13 Knauf gypsum cardboard board
 - Primed and painted white Q4, latex paint, mat colour

- IW2**
- Primed and painted white Q4, latex paint, mat colour
 - 12.5mm Knauf gypsum cardboard board
 - 12.5mm Knauf gypsum cardboard board
 - 60mm PIR Panels ($U=0,33$ W/m²K)
 - 12.5mm Knauf gypsum cardboard board
 - 12.5mm Knauf gypsum cardboard board
 - Primed and painted white Q4, latex paint, mat colour

Floor - Outside/Inside layer:

- 120mm PIR Supreme Panels ($U=0,146$ W/m²K)
- 18 mm Fermacell gypsum fiber boards
- 18 mm Fermacell gypsum fiber boards
- 2 mm PVC Tarkett Primo Premium Dark Cool grey 0674
- Döllken WL 50 self-adhesive skirting, 0348 Anthracite

Ground view



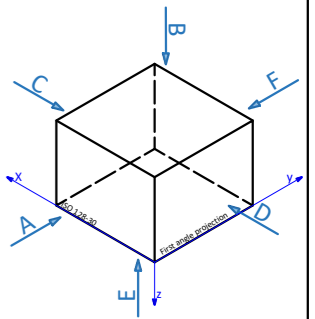
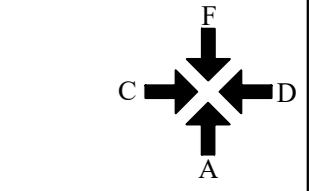
Doors and windows:

D1 Main entrance door, hole in the wall (panel), Wall opening 1010x2130mm;

D2 Inside door, hole in the wall (panel), Wall opening 980x2020mm;

W1 PIVA PG75 (fire reaction Class B1 DIN 4102) (Air tightness Class 4, EN12207) (Water tightness Class E750, EN 12208) (Wind resistance Class C3/B3, EN 12210)

Double window; Wall opening 1870x1345mm; Glass: 4/12/4/12/4 [$U_g=0,7$ W/m²K, $U_w=1,0$ W/m²K]; Turn and tilt; External blinds with hand crank; Colour: White



Project : 5018-22 Luks	Projet leader: Požega B.
Drawing : Ground And Side Views - RevA	Designer: Jugovac M.
Client : EUROmodul Schweiz AG	Creation date: 24.3.2022
	Last edit date: 30.04.2022
EUROmodul d.o.o. Kukuljanovo 335, 51223 KUKULJANOVO tel/fax +385 (0)51 257-275, e-mail: info@euromodul.hr	Format : A2
	Mass: 1:50
	Page : ---- / 1